

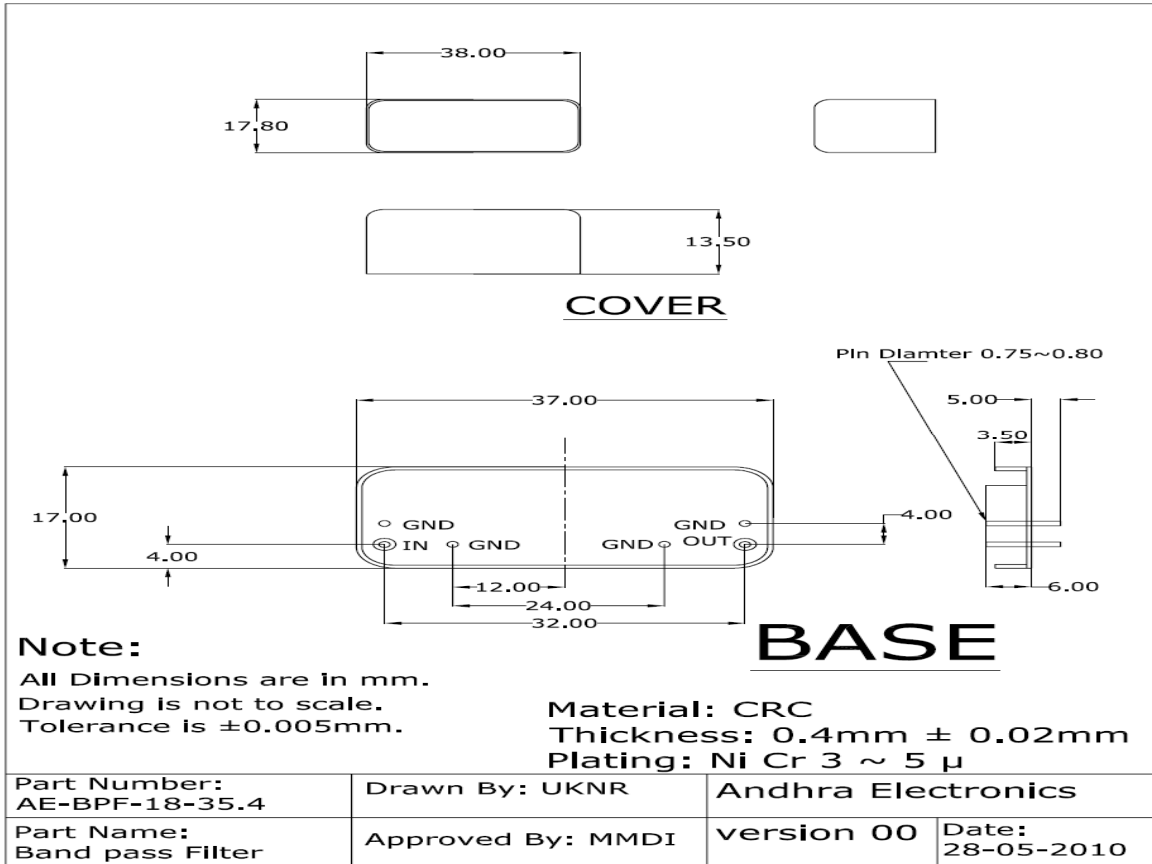


ANDHRA ELECTRONICS LIMITED

BAND PASS FILTER

PART NO: AE-LC-30-30
FREQ: 30 MHz

1. Center Frequency(Fc)	:	30 MHz
2. Insertion Loss	:	3dB(Max)
3. Pass Band@1dB	:	$F_c \pm 500$ KHz
4. Ripple In Pass Band	:	0.5dBMax
5. Rejection @ 50 dB	:	$F_c \pm 15$ MHz
@ 60 dB	:	$F_c \pm 20$ MHz
6. Impedance	:	50 Ω
7. Spurious	:	70dBMin
8. VSWR(IN&OUT)	:	1.4:1
9. Operating Temperature	:	-40 to +85degC
10. Package	:	Pin Version
11. Dimensions	:	37x17x13.50mm



Plot Nos.34 & 35, Industrial Development Area, KAKINADA - 533 005, INDIA.
Phone: 91-884-2342203 / 2341850 / 2379407 ♣ Fax: 91-884-2341145 / 2379408
E-mail: info@andhraelec.com ♣ www.andhraelec.com

