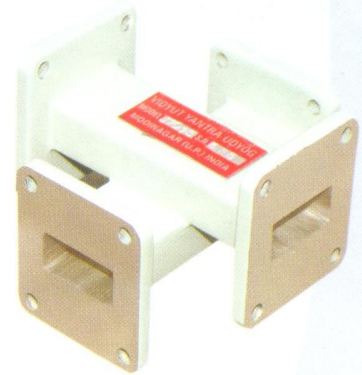


CROSS DIRECTIONAL COUPLERS

- Model 6062 Cross Directional coupler consists of two sections of Waveguide joined together at right angles. The coupling is provide by starslots made in broad wall of waveguide. The size and location of these slots are so made that a uniform coupling of 20 db over the entire band of frequency is obtained. It is used in monitoring signal frequency, power etc. in a microwave system.
- Coupling accuracy is maintained ± 1.0 db (typ.) and frequency - sensitivity is ± 1.5 db aprox. Couplings other than 20 db can also be provided. Directivity of these couplers is of the order of 20.
- Cross Directional couplers with one port terminated with load are also available.



X-6062

Model No.	Frequency Range (GHz)	Waveguide type (WR-)	Flange type (UG-/U)
L-6062	1.70-2.60	430	CPR-430
S-6062	2.60-3.95	284	53
C-6062	3.95-5.85	187	149A
J-6062	5.85-8.20	137	344
X-6062	8.20-12.4	90	39
Ku-6062	12.4-18.0	62	419
K-6062	18.0-26.5	42	595
R-6062	26.5-40.0	28	599